

**60W**



**Horn Speaker, with 100 V transformer ..... H1260TA**

**80W**



**Horn Speaker, with 100 V transformer ..... H1680TA**

**100W**



**Horn Speaker, with 100 V transformer ..... H20100TA**

**Description**

Very stable and attractive horn speaker with integrated 100V matching transformer. In spite of its stability this speaker series has a very modern and appealing appearance. The back side cover, in which also the matching transformer is installed, is made of scratch- and impact resistant plastic. The horn is made of solid aluminium and the mounting of enamelled steel.

Of course it is also possible to paint this equipment in each RAL colour (number) according to the architects requirement. The mounting bracket is fully tiltable and also very easy to mount.

Please consider the following features:

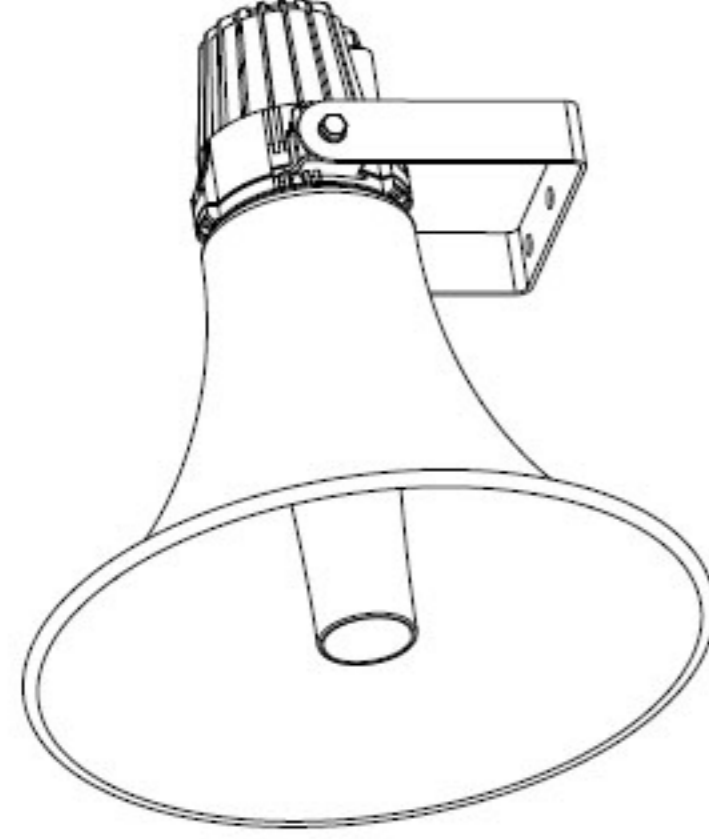
- The complete construction of this horn speaker series has the highest protection type, IP 66.
- The 2-pole connection cable (flexible hose line) is led through a waterproof PG-screw joint .
- The 6-step impedance is switchable with a screwdriver at the rear side of the unit.
- The Horn-Speaker-Systems are constructed for superlative sound pressure and provide an amazingly good frequency response.

Technical data	H1260TA
Load rating	60 W
Nominal impedance	16 ohms
Transformer tapings	60-30-15 W (100V) 60-30-15-7.5W (70V)
Frequency range	400Hz-5KHz
SPL(@1W/m)	103 dB
Protection type	IP 66
Dimension Ø×L (mm)	Ø323×357mm
Material, Colour	Alu / RAL7042

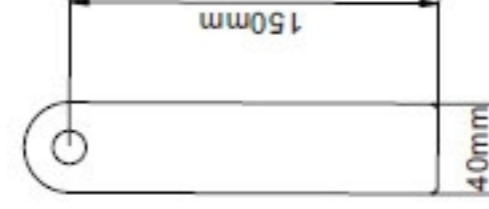
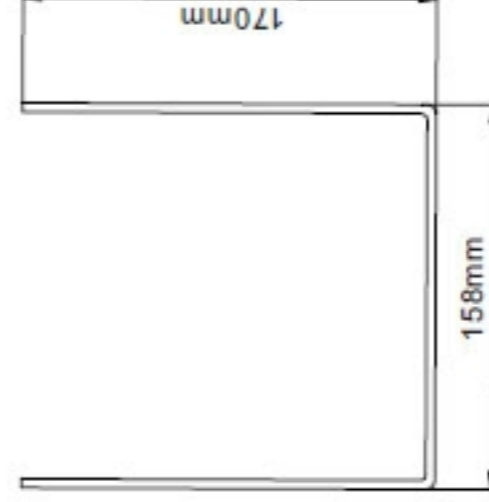
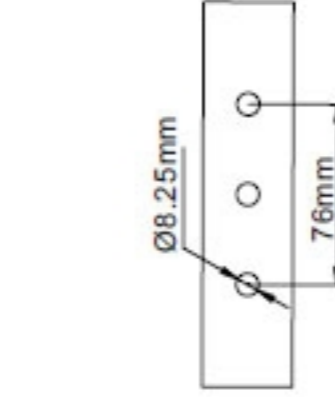
Technical data	H1680TA	H20100TA
Load rating	80 W	100 W
Nominal impedance	16 ohms	16 ohms
Transformer tapings	80-40-20 W (100V) 80-40-30-10W (70V)	100-50-25 W (100V) 100-50-25-12.5W (70V)
Frequency range	400Hz-5KHz	400Hz-5KHz
SPL(@1W/m)	105 dB	108 dB
Protection type	IP 66	IP 66
Dimension Ø×L (mm)	Ø405×420mm	Ø500×482mm
Material, Colour	Alu / RAL7042	Alu / RAL7042



## Speaker



## 3 Bracket



## Specifications

Technical data	H1260T	H1680T	H20100T
Load rating	60W	80W	100W
Nominal impedance	16 ohm	16 ohm	16 ohm
Transformer tapings	60/30/15W	80/40/20W	100/50/25W
Frequency range	400Hz-10KHz	400Hz-10KHz	400Hz-10KHz
SPL(@1W/m)	105 dB	106 dB	108 dB
Protection type	IP 56	IP 56	IP 56
Dimension ØxD(mm)	Ø323 x 357 mm	Ø405 x 420 mm	Ø500 x 482 mm
Material	Aluminium	Aluminium	Aluminium